

Brief Statement: See Instructions for Use for detailed information regarding the procedure, indications, contraindications, warnings, precautions, and potential adverse events.



eifu.aspivix.com
+800 135 79 135

Copyrights ©2022, Aspivix SA. All Rights Reserved. www.aspivix.com

ASPIVIX SA
Global Headquarters
Chemin du Closel 5
1020 – Renens
Switzerland



Visit Us



P03-553-001 Rev A ©2022 Aspivix SA. Specifications are subject to change without prior notice. Aspivix, and Carevix are trademarks or registered trademarks of Aspivix SA and/or its subsidiaries. Licensed material is being used for illustrative purposes only. Any person depicted in the licensed material is a model.

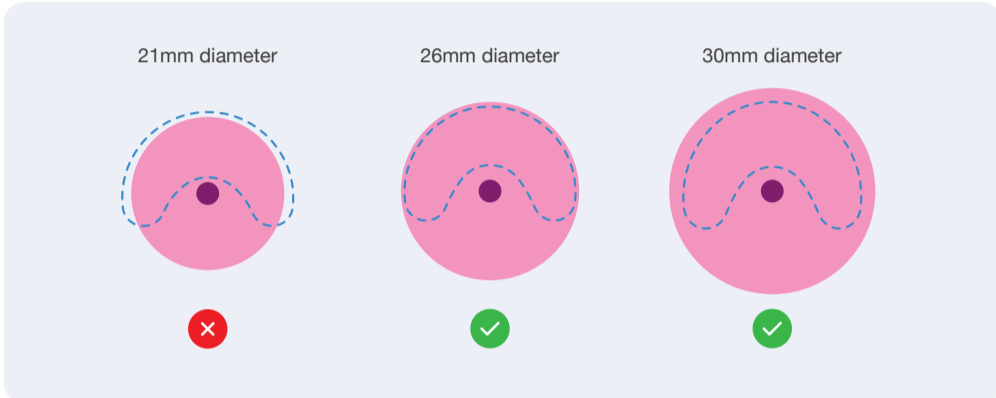
carevix™
Suction Cervical Stabilizer

Procedure Guide

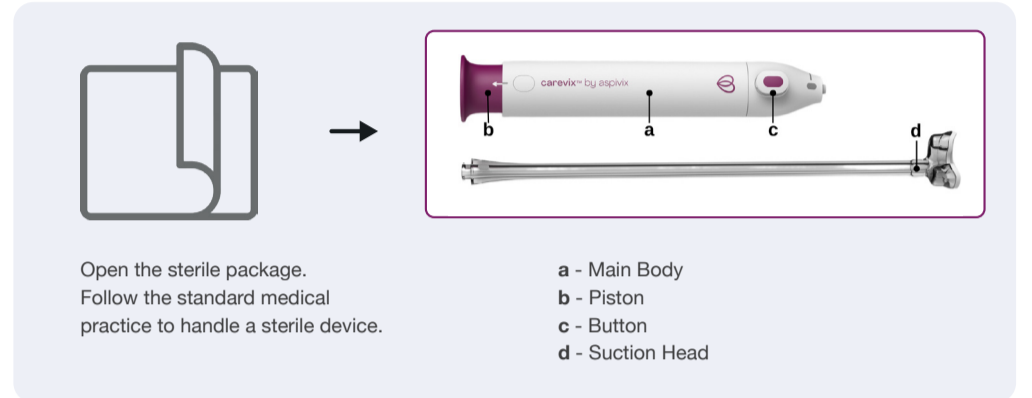
3 Simple Steps



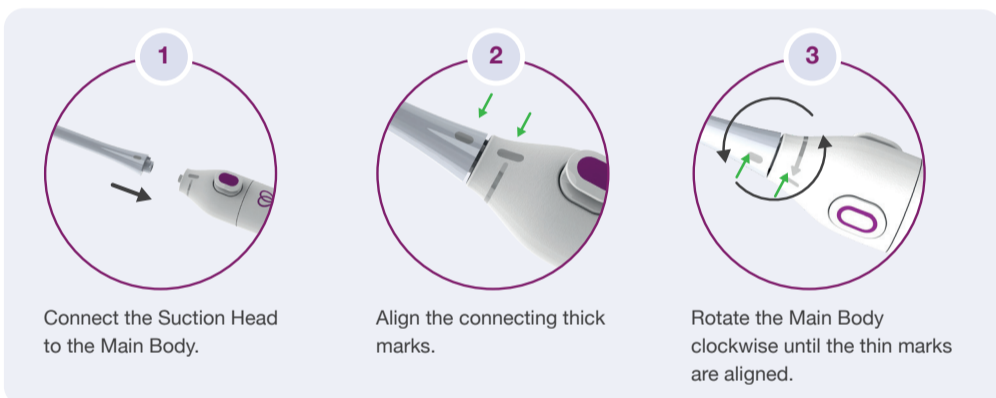
Ensure cervix diameter is greater or equal to 26 mm.



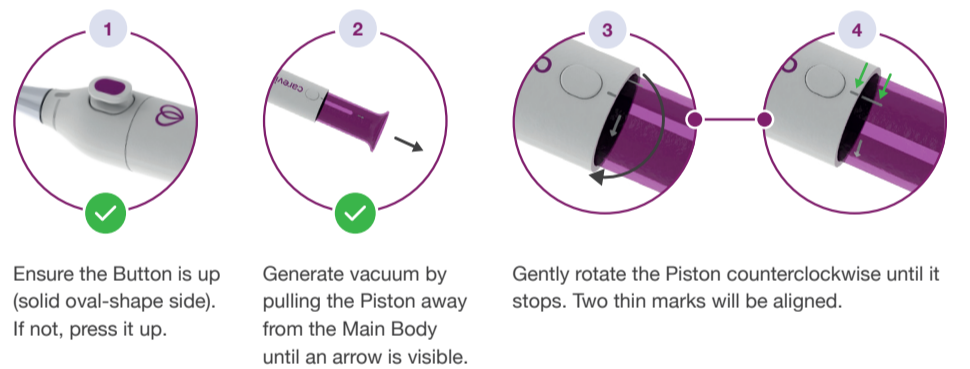
Open the Package



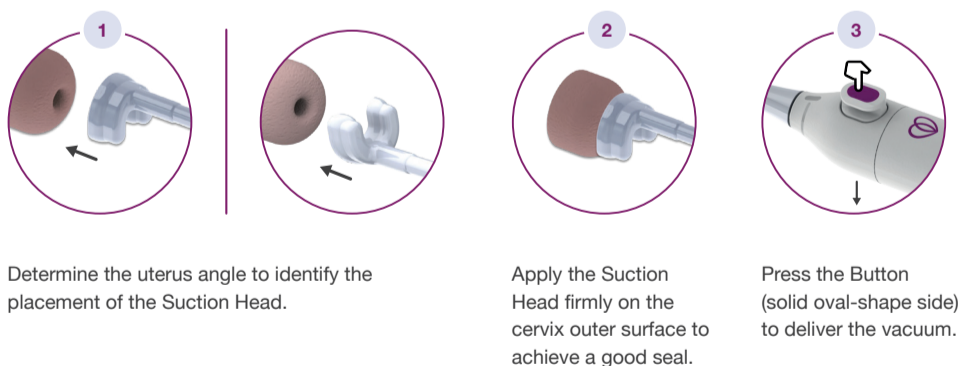
Assemble the Device



Step 1 Generate the Vacuum



Step 2 Hold the Cervix



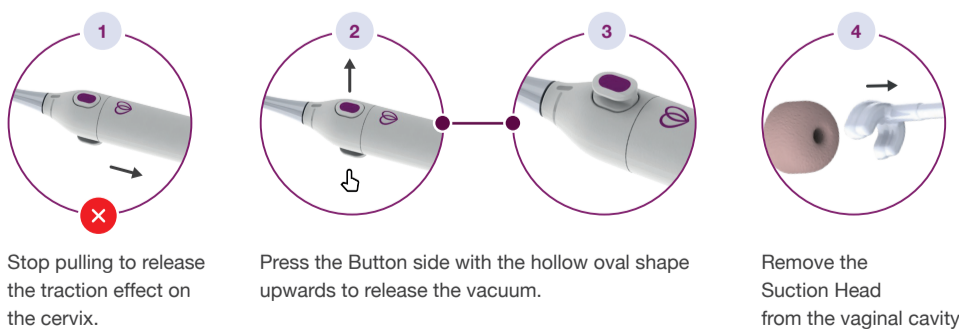
Wait 10 seconds, before pulling



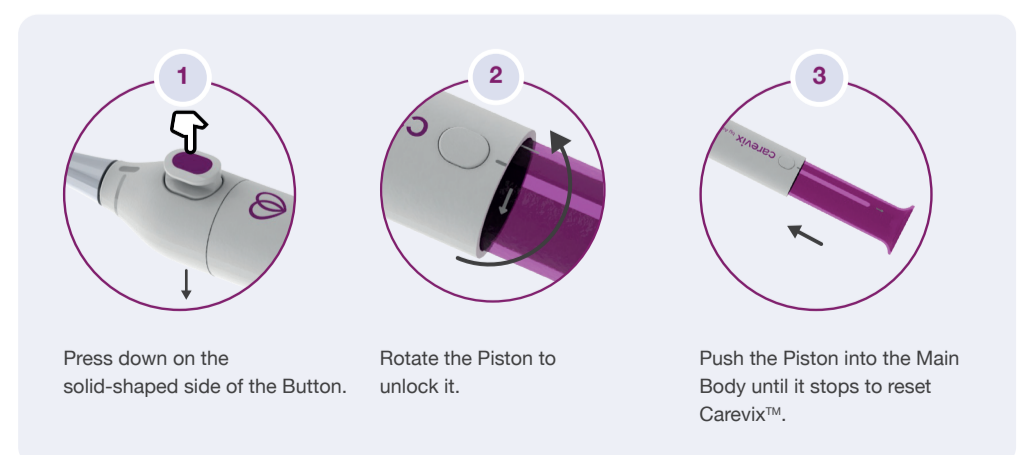
Wait 10 seconds to let the cervical tissue come into the Suction Head prior to pulling and manipulating the cervix.

Pull the Main Body straight to align the cervix with the uterus body while maintaining the seal with the cervix.

Step 3 Release the Cervix



A Reset the Device, if needed.



Important Note:

If the device cannot be released, follow step A to reset Carevix™.