

# carevix™

Suction Cervical Stabilizer

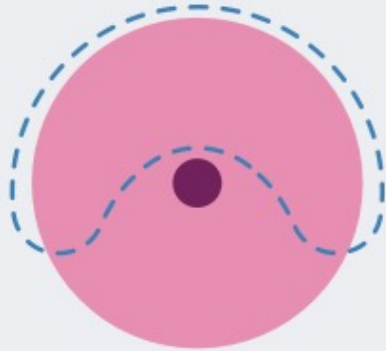
## Procedure Guide

**3** Simple  
Steps

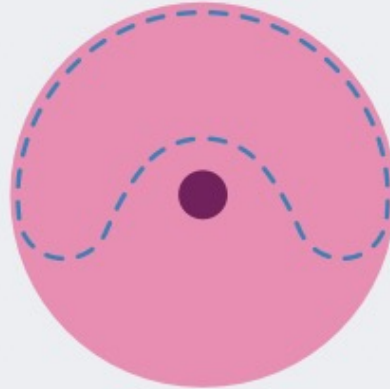


# Ensure cervix diameter is greater or equal to 26 mm.

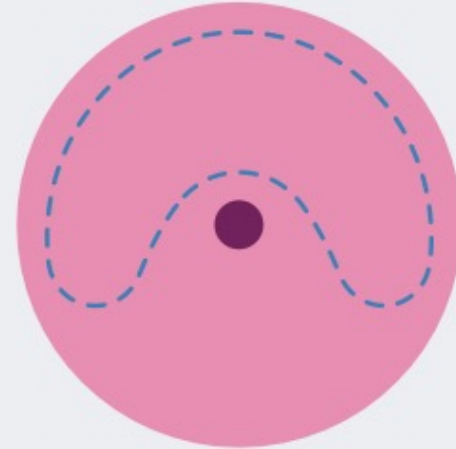
21mm diameter



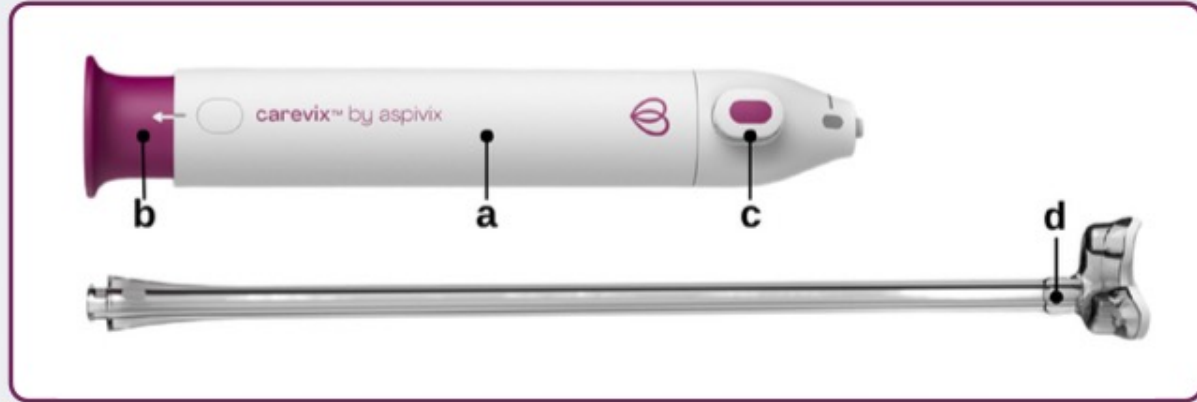
26mm diameter



30mm diameter



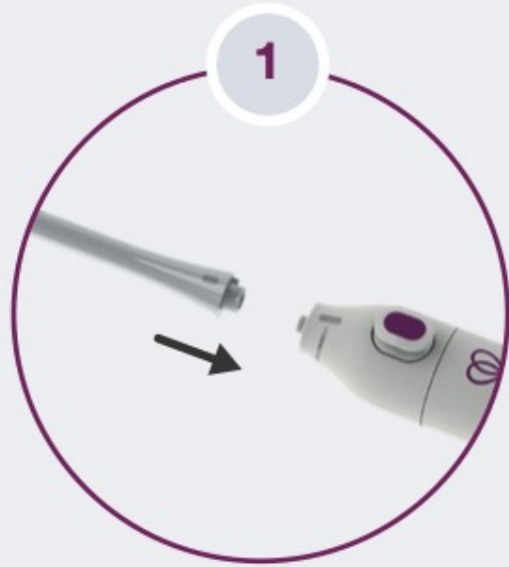
# Open the Package



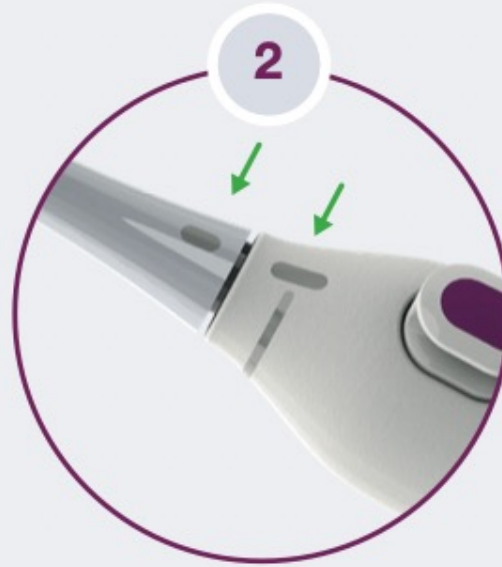
Open the sterile package.  
Follow the standard medical  
practice to handle a sterile device.

- a** - Main Body
- b** - Piston
- c** - Button
- d** - Suction Head

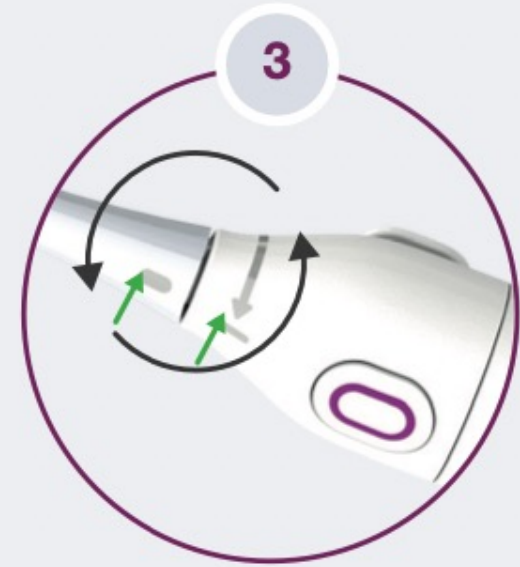
# Assemble the Device



Connect the Suction Head to the Main Body.



Align the connecting thick marks.



Rotate the Main Body clockwise until the thin marks are aligned.

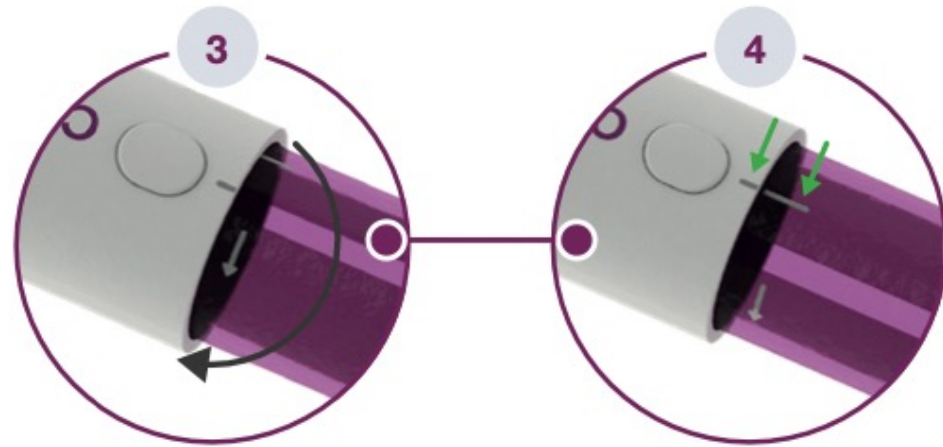
# Step 1 Generate the Vacuum



Ensure the Button is up (solid oval-shape side). If not, press it up.



Generate vacuum by pulling the Piston away from the Main Body until an arrow is visible.



Gently rotate the Piston counterclockwise until it stops. Two thin marks will be aligned.

## Step 2 Hold the Cervix



Determine the uterus angle to identify the placement of the Suction Head.



Apply the Suction Head firmly on the cervix outer surface to achieve a good seal.



Press the Button (solid oval-shape side) to deliver the vacuum.



**Wait 10 seconds, before pulling**



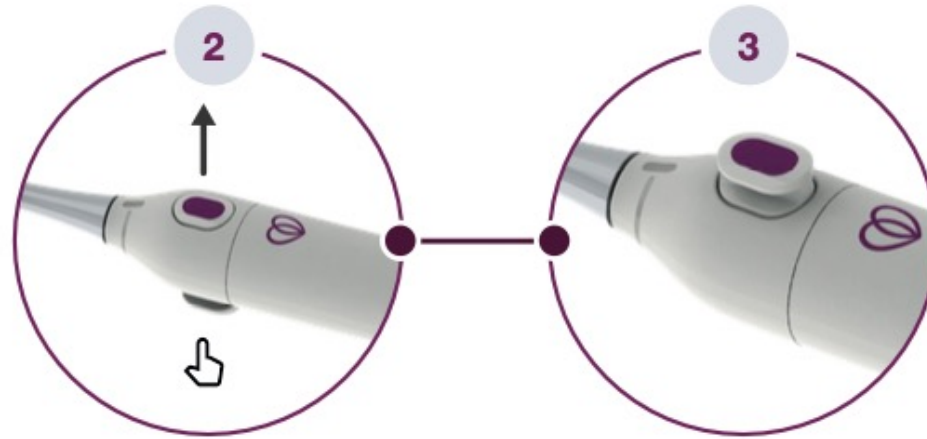
Wait 10 seconds to let the cervical tissue come into the Suction Head prior to pulling and manipulating the cervix.

Pull the Main Body straight to align the cervix with the uterus Body while maintaining the seal with the cervix.

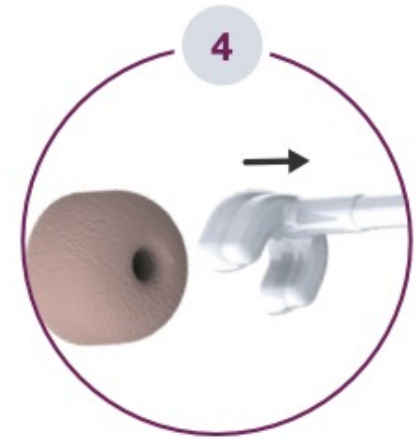
## Step 3 Release the Cervix



Stop pulling to release the traction effect on the cervix.



Press the Button side with the hollow oval shape upwards to release the vacuum.



Remove the Suction Head from the vaginal cavity.

### Important Note:

If the device cannot be released, follow step A to reset Carevix™.

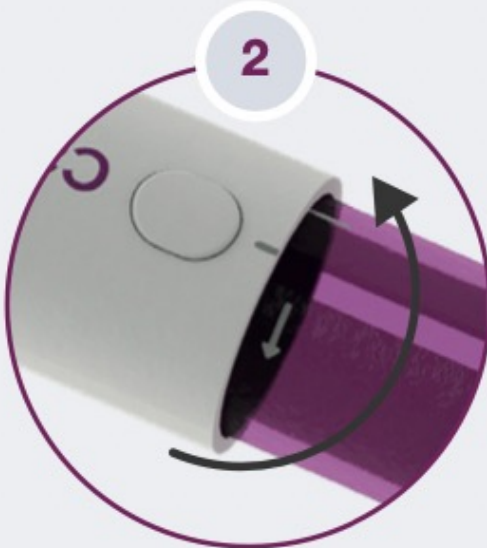


**A**

**Reset the Device, if needed.**



Press down on the solid-shaped side of the Button.



Rotate the Piston to unlock it.



Push the Piston into the Main Body until it stops to reset Carevix™.